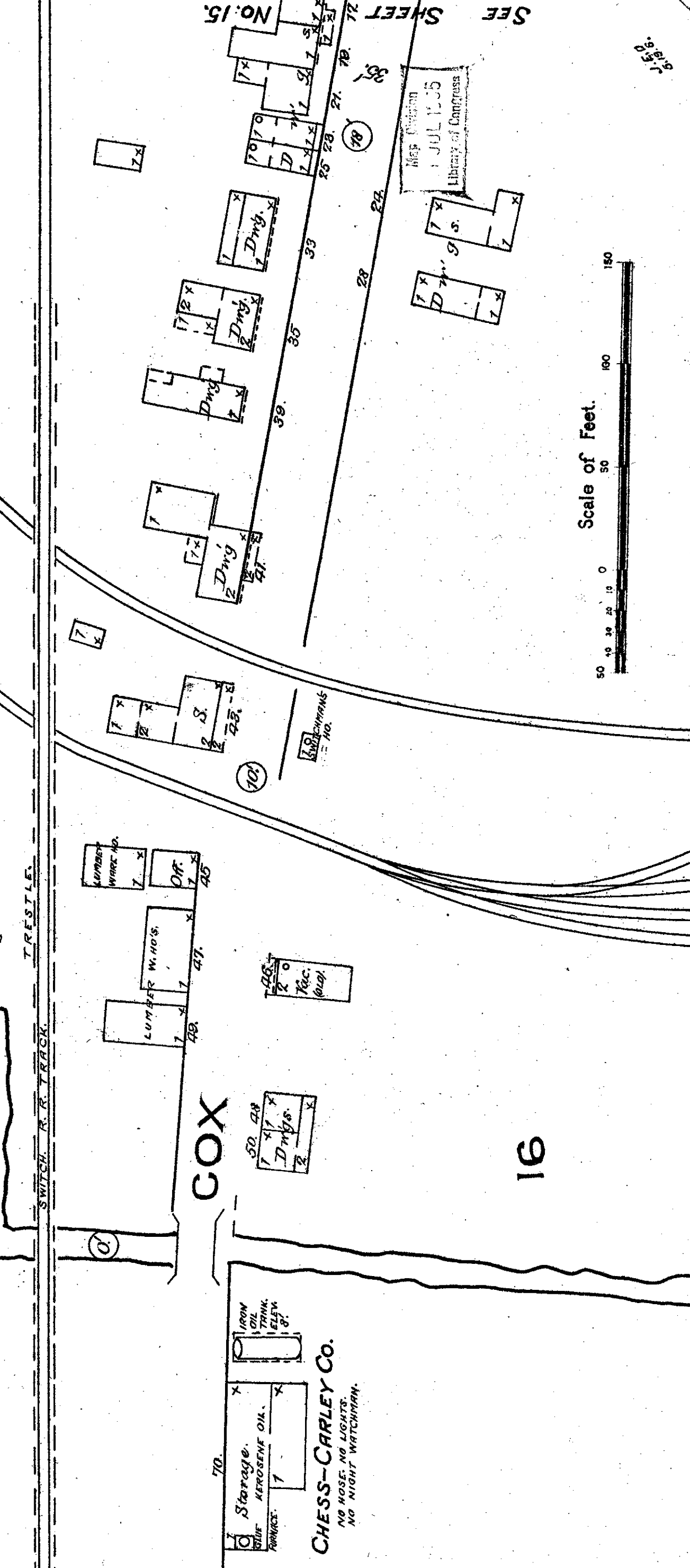
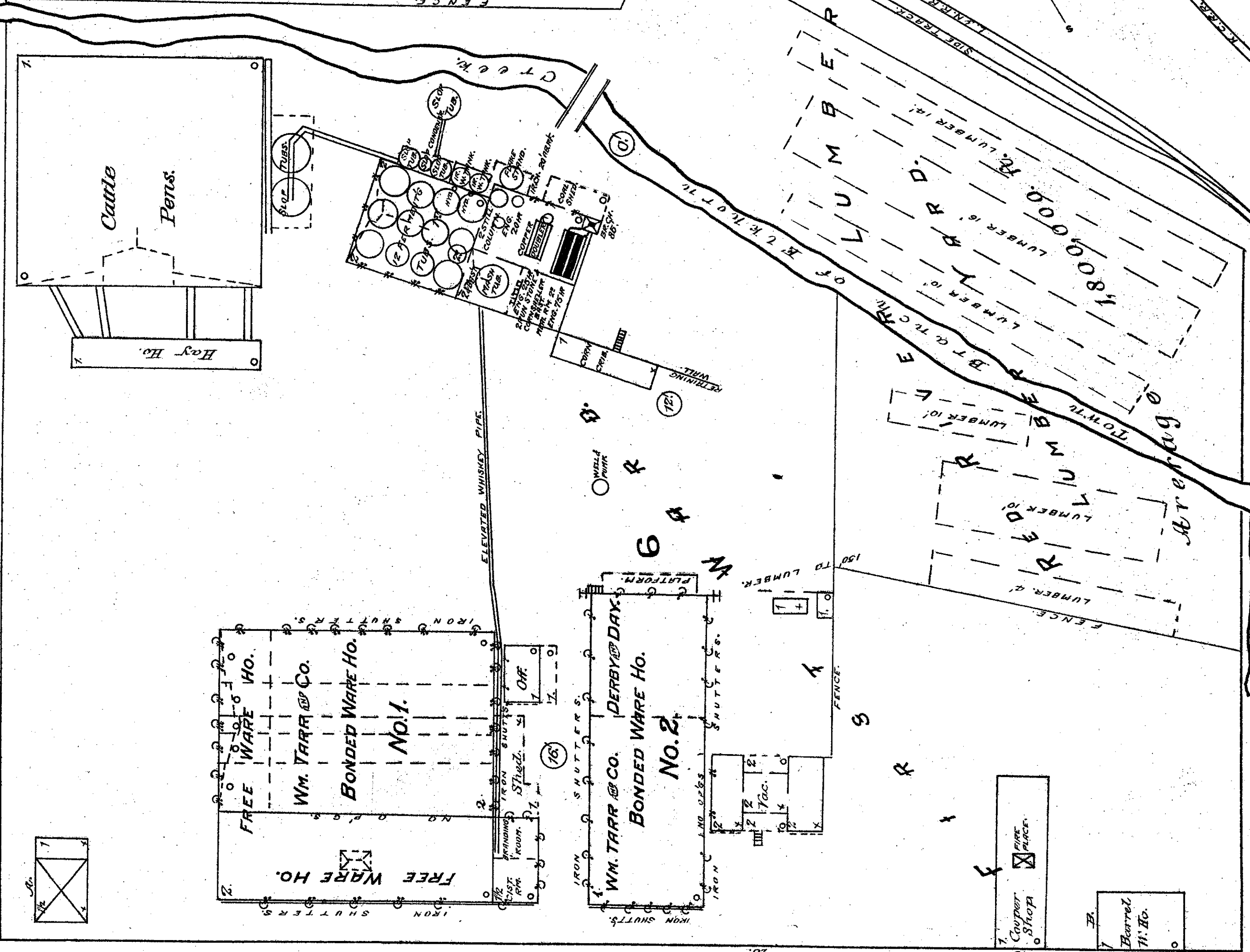


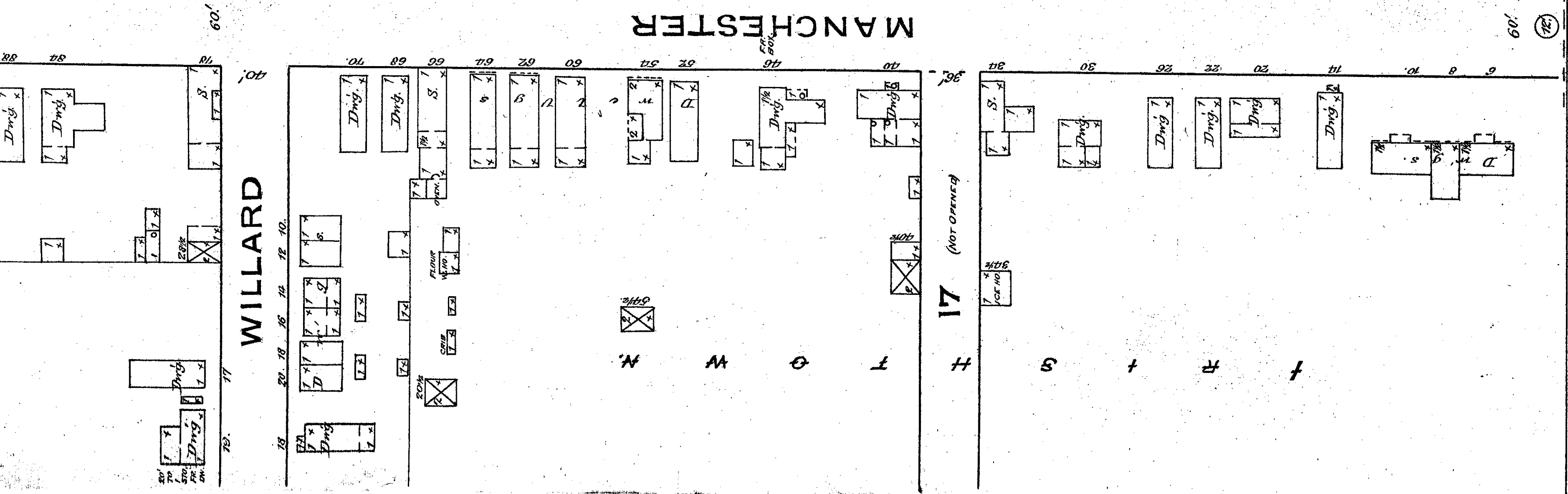
WM. TARR & CO.
"ASHLAND"
REGISTERED DISTILLERY No. 1. 7th Dist.
Fayette Co. Ky.

WASH. 400 TO 420 BUSINES PER DAY. AVERAGE YIELD 30 BBL PER DAY.
FUEL: COAL. POWER: STEAM. LIGHTS: LAMP & LANTERN. KEROSENE OIL. ART: STOVE.



Scale of Feet.
0 50 100 150

SEE SHEET No. 15



WILLARD

MANCHESTER

17 (NOT OPENED)

CHESS-CARLEY CO.
NO HOSE, NO LIGHTS,
NO NIGHT WATCHMAN.

MANCHESTER

W
O
R
K
S
H
O
P

18